

WOOD WALL FRAMING

FRAMING STATION WITH LOCATORS



The Framing Station with Locators is designed to hold the plates, subcomponents, and studs squarely in place for fastening. It consists of a framing table with color-coded stud locators at 16" and 24" spacing to ensure consistent stud placement.

The Panels Plus panelized wall panel systems are more ergonomic than traditional construction methods and are developed at an ergonomic working height. This eliminates the need to continually kneel or hunch over to build wall panels – improving employee health and safety.

Framing Stations come equipped with indexing tool carriages and can also be purchased without. Indexing tool carriages eliminate the need to fasten wall panels by hand and allow operators to work at a safer ergonomic height.



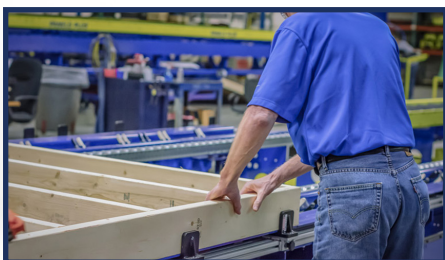
Framing Table with Indexing Tool Carriages



Indexing Tool Carriage



Color-Coded Stud Locators



Adjustable Squaring Edge

Benefits

- Ergonomic working height
- Improved squareness vs. traditional methods
- Superior wall panel consistency

Features

- Framing Table
 - Stationary Side
 - Telescoping Side
 - Stud Locators
 - Squaring Edge
 - Footswitch & Push-Button Controls
 - Pop-up Conveyors
 - Indexing Tool Carriages (2)
- *if equipped



The Panels Plus Promise

We promise to support our customers for as long as they own Panels Plus equipment. Whether you're a startup plant and need technical expertise, or you're seasoned in the industry and are planning to integrate equipment into your existing lines, Panels Plus will be here to help ensure your success.

- Technical Expertise & Assistance
- Installation & Training
- Customer Support