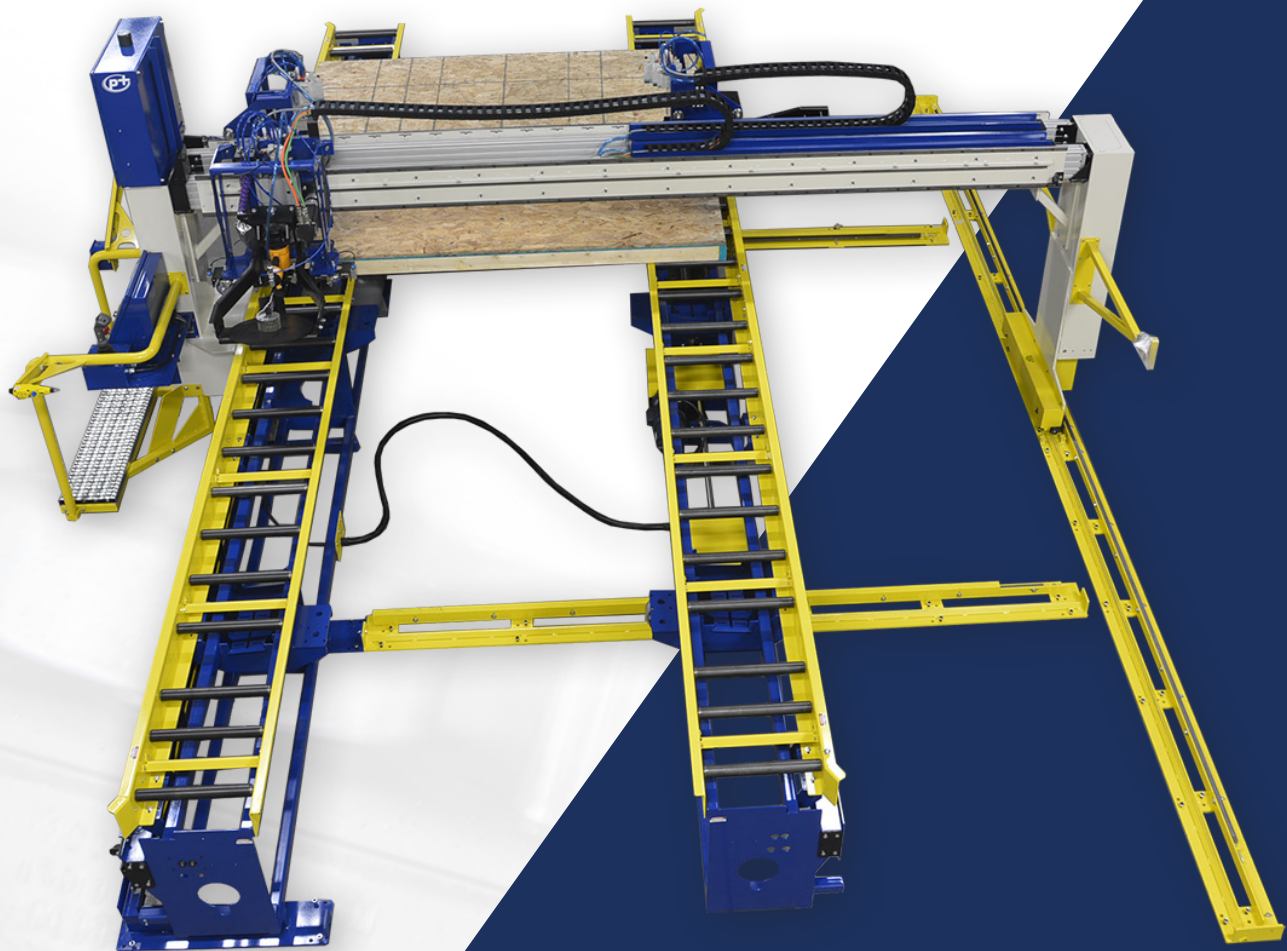


WOOD WALL SHEATHING

SINGLE BEAM SHEATHING STATION



The Single Beam Sheathing Station offers flexibility in fastener spacing both in the field, on seams, and while stitching the top and bottom plates. This Sheathing Station consists of a squaring table and single beam bridge equipped with a tool carriage and stitchers to fasten sheathing to wood wall panels.

The tool carriage travels across the wall inserting fasteners at the spacing set by the operator. The stitchers will automatically insert fasteners through the sheathing into the top and bottom plates at your chosen spacing during the auto-return process. The bridge has 9 programable presets for fastener spacing and 9 for wall height.

The Panels Plus panelized wall panel systems are more ergonomic than traditional construction methods and are developed at an ergonomic working height. This eliminates the need to continually kneel or hunch over to build wall panels – improving employee health and safety.



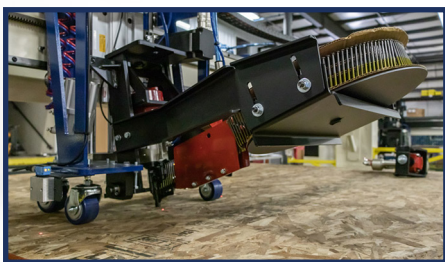
**Single Beam
Sheathing Station**



Touchscreen & Joystick



**Sheathing Station With
Operator Platform**



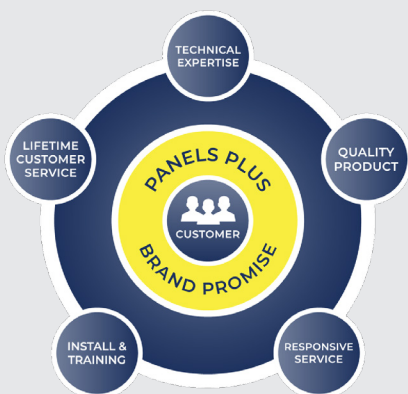
Tool Carriage

Benefits

- Ergonomic working height
- Flexibility with fastener spacing
- Fastens consistently and accurately
- Reduces the risk of “shiners”

Features

- Squaring Table
- Single Beam Bridge
- Tool Carriage
- Joystick
- Plate Stitchers
- Operator Platform
- Touchscreen
- Stationary Side
- Telescoping Side
- Squaring Edge
- Footswitch & Push-Button Controls
- Horizontal Rollers



The Panels Plus Promise

We promise to support our customers for as long as they own Panels Plus equipment. Whether you're a startup plant and need technical expertise, or you're seasoned in the industry and are planning to integrate equipment into your existing lines, Panels Plus will be here to help ensure your success.

- Technical Expertise & Assistance
- Installation & Training
- Customer Support