

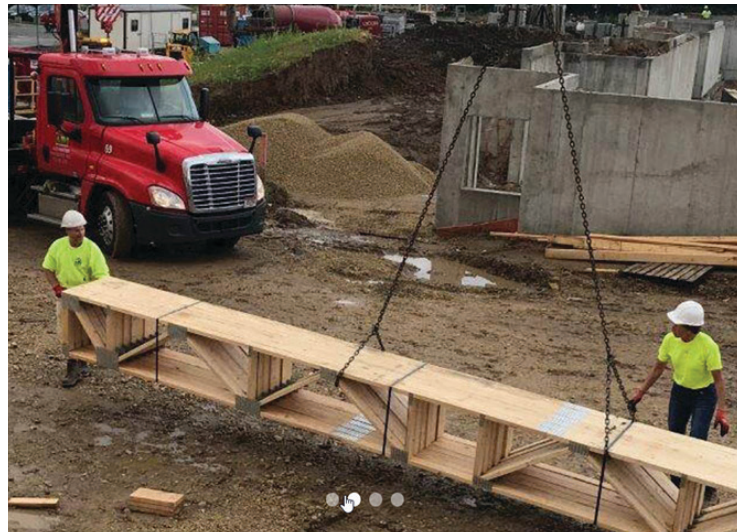


RELIABLE EQUIPMENT PASSES DAILY TESTS

Labor Savings • Process Improvement • Enhanced Precision
Seamless Integration • Reliable Performance

OUR OPPORTUNITY:

When Sean Kelly, the Owner of Automated Products Inc., encountered Panels Plus equipment at the Building Component Manufacturers Conference (BCMC), he recognized the potential for significant enhancement in his operations. API already had an existing wall panel line from a Panels Plus competitor, but they were not satisfied with its overall performance and were looking to upgrade their equipment.



ABOUT THE CLIENT

Industry:
Manufactured Construction
Materials

Location:

Marshfield, WI.

Founded in 1964, Automated Products Inc. (API) manufactures floor, wall and roof trusses; wall panels (including tall walls); floor panels; and engineered wood products (EWP), LP's, and LVL for the residential and commercial construction industries.

www.apiebs.com

OUR SOLUTION:

API purchased a Panels Plus semi-automated Sheathing Station at BCMC to replace part of their current production line, and shortly thereafter, purchased more Panels Plus equipment. The upgrade to Panels Plus surpassed his previous equipment and immediately stood out due to its high-quality design and construction. His team found the Panels Plus equipment remarkably user-friendly and highlighted that the ease of working with the equipment is its biggest advantage. It not only simplified the team's wall panel construction, but also ensured the precision and squareness of the panels. This made it a seamless addition to API's workflow.



THE RESULTS:

The shift towards Panels Plus equipment has been a positive one. Sean Kelly and his team have integrated **four full lines** of Panels Plus equipment, further demonstrating the importance Panels Plus has played in API's goal of producing outstanding construction components. They have recently placed an order for two Platinum Series Automated Sheathing Stations to further upgrade their facilities. Sean Kelly sums up the experience with conviction, **"In my opinion it's the best equipment out there, and everything I have is Panels Plus equipment. It's very good, extremely reliable and nothing ever breaks. It's tested every day – and passes the test,"** says Kelly.

"The previous nailing bridges we had weren't nearly as good as Panels Plus's and were harder to work with. Our new Panels Plus semi-automatic nailing bridges save labor. The equipment is the right height, which makes the work easy, and the rollers are very good and easily adjustable."

Sean Kelly, Owner
Automated Products Inc.