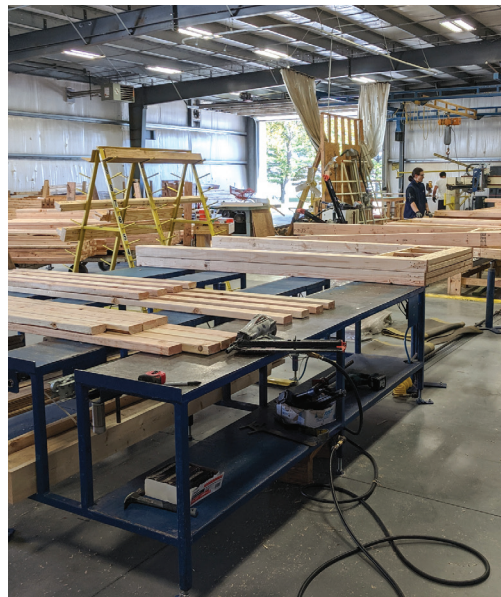


# Ergonomics Meets Efficiency: How Panels Plus Revolutionized Wall Panel Production

Enhanced Efficiency • Improved Ergonomics • Outstanding Customer Care  
• User Friendly Design

## THEIR CHALLENGE:

Warren Schwenk, Wall Panel Production Manager sought to enhance operational efficiency and create a safer, more ergonomic environment for his workforce. The existing equipment proved not only cumbersome, but also posed safety risks, as workers often had to climb onto the tables to make wall panel adjustments. Schwenk recognized that these challenges were impeding productivity, and more critically, jeopardizing the well-being of his team. While searching for potential equipment suppliers online, Schwenk discovered Panels Plus to be the best option.



## ABOUT THE CLIENT

**Industry:**  
Building Materials

**Location:**  
Leola, PA

H.M. Stauffer & Sons, Inc. (now part of Culpeper Wood Preservers) is a manufacturer of roof trusses, floor trusses and wall panels, primarily building prefab walls and trusses for commercial and residential buildings.

[www.hmstauffer.com](http://www.hmstauffer.com)

## OUR SOLUTION:

After connecting with Schwenk, members of the Panels Plus team flew out to visit H.M. Stauffer and see their current facility. Panels Plus discussed equipment options and provided advice on selecting the best fit for their plant layout and goals. H.M. Stauffer initially acquired a Single Tool Sheathing Station, followed by additional equipment in subsequent years. According to Schwenk, his Panels Plus equipment is more user friendly and the technology is better than their previous tilt and framing tables. The equipment is also more ergonomic and easier for his team to operate, as operators can simply press buttons on the nailing bridge. Furthermore, their new Tilt Table eliminates the need for employees to climb onto tables for adjustments, and they no longer have to lean in or reach across the table.



“Panels Plus equipment seemed like the best option. I like their products. We keep getting equipment from them because it’s the best and they’re really good to deal with. When you call, there’s no operator, just get the person you want to talk to. It’s just them.”

Warren Schwenk, Wall Panel Production Manager  
H.M. Stauffer

## THE RESULTS:

Over the years, H.M. Stauffer has purchased a Single Tool Sheathing Station, Wood Wall Combo Station, two Pneumatic Tilt Tables, and Handlebar Routers. Schwenk believes that the most significant advantages provided by his Panels Plus equipment are efficiency, ease of operation, and quality. **“I’d recommend Panels Plus equipment wholeheartedly.** The customer service and the guys I deal with are great. There aren’t many issues because it’s well built. If I have an issue, they’re on it. **When you need them, they take care of you,**” adds Schwenk.

## EXPERIENCE THE PANELS PLUS ADVANTAGE!

Discover the difference our innovative solutions can make for your operations!

Visit our website at [panplus.com](http://panplus.com), call us at 866.726.7587, or email us at [sales@panplus.com](mailto:sales@panplus.com) to learn more.